



Old Town Canoe  
 35 Middle Street  
 Old Town, Maine 04468  
 207-827-5513  
 www.oldtowncanoe.com

<h1>Kevlar Skid Plate Kit</h1>		
Kit# 01.1331.0640	Revision 3/03	Page 1 of 2



**Kit Contents:**

Quantity	Description	Part Number
2	Sandpaper	1311.1050
2	Stirring Stick	1311.0446
2	Skid Plate Felt	1331.0645
2	Can Resin	1331.0640A
2	Can Hardener	1331.0640B

**Materials needed:**

Clean, dry dust cloth	1 ½ or 2 inch wide masking tape	Disposable paintbrush
Plastic sheet for drip cover	Disposable gloves	Measuring tape

For Discovery Polyethylene canoes: small handheld propane torch

**Step 1: Preparing the surface:**

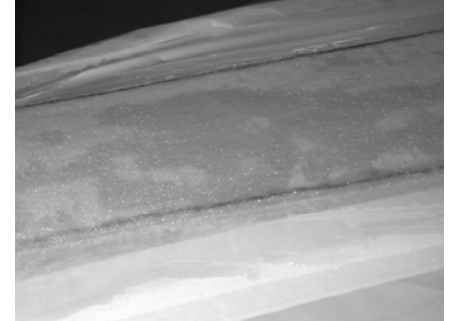
- Position canoe upside down in a clean, well-ventilated area out of direct sunlight.
- Measure 14 inches from the edge of the black deck to the bottom of the canoe and place mark. The narrow end of skid plate will start here.
- Lay one piece of the skid plate felt with the smoother side up on the center of the bottom, using 2 small pieces of masking tape on each end to hold it in place.
- Mask 1/8" away from perimeter of the skid plate with tape. Cut the small tape pieces and remove the felt.
- Remove tape from skid plate carefully.
- Sand the area inside the tape outline with rough sandpaper. Wipe the sanded area with a clean dry cloth. Look carefully at the surface for any shiny areas showing missed places. Sand them again.



Taped perimeter



Skid plate ready for resin application



Close-up of resin application

### **Step 1.5 For Polyethylene Discovery Canoes Only: You MUST use this extra step...**

You will use the handheld propane torch to “flame” the entire sanded surface. The process does NOT involve melting or blackening the surface.

1. Remove tape outline.
2. Light the propane torch. The flame will have an inner cone and an outer cone. Adjust the flame so that the inner cone extends about 1” from the nozzle.
3. Moving quickly and smoothly, bring the tip of the inner cone briefly in contact with the surface of the canoe, and move up one long side, down the other, and up the center. The flame should touch the hull in any one spot only momentarily.
4. If you feel that you have missed some of the area, wait approximately 20 minutes and repeat process.
5. Do not touch the area after flaming as the oils from your fingers could reverse the process.
6. Reattach tape outline.

### **Step 2:Applying the felt: DO NOT apply in direct sunlight. Wear gloves. Work in a well-ventilated area.**

- Resin working time is 20 minutes at 70° Fahrenheit, about 10 minutes at 90°F.
- Tape the edge of the drip cover to the tape outline. Be careful not to overlap into the working area, and be sure that the tape adheres all around to prevent runs onto the canoe hull.
- Mix resin by pouring all of one can B (hardener) into one can A (resin). MIX WELL.
- With the paintbrush, apply a layer of mixed resin to the area that has been sanded.
- Lay the dry felt carefully in place. Pat it firmly with your (gloved) hand or the paintbrush to bring the excess resin up through the skid plate.
- Using the brush, apply as much of the remaining resin as needed to completely wet through the felt. The photo above shows a skid plate needing more resin.
- Remove any air trapped under the felt by gently working it over to the edge.

### **Step 3:Finishing:**

- Remove the drip cover and the masking tape. Allow the resin to cure for 24 hours.
- Smooth the surface of the skid plate by sanding it with medium grit sandpaper after it is dry.

Repeat entire process on other end of canoe.